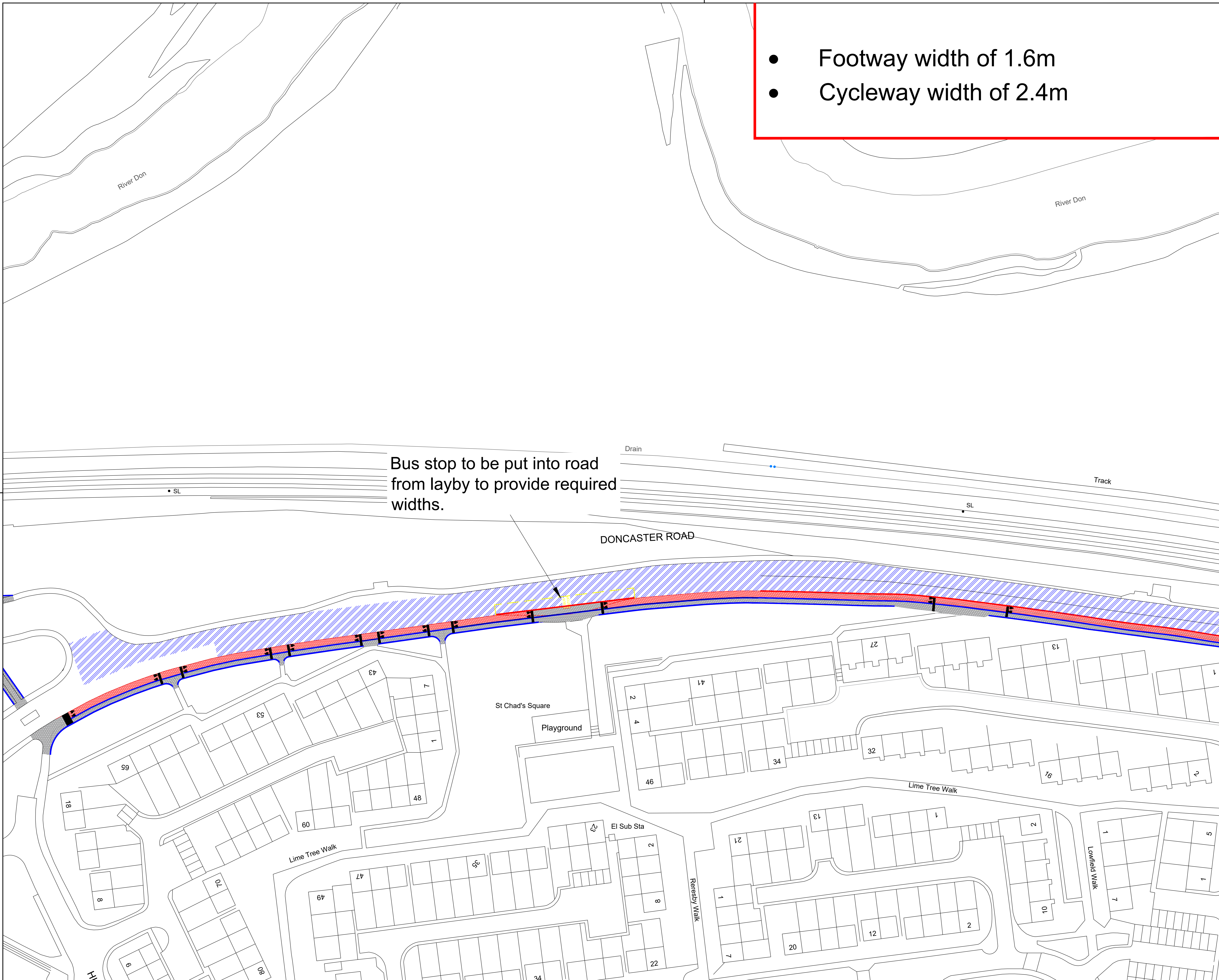


- Footway width of 1.6m
- Cycleway width of 2.4m



This map is reproduced from Ordnance Survey material with the permission of Ordnance Survey on behalf of the Controller of Her Majesty's Stationery Office © Crown copyright. Unauthorised reproduction infringes Crown copyright and may lead to prosecution or civil proceedings. (100019782) (2011)

Rev	Revision Details	Rev by	Chk by	Date

Doncaster
Metropolitan Borough Council
REGENERATION & ENVIRONMENT
DEVELOPMENT
MAJOR PROJECTS AND INVESTMENT
Civic Offices
Waterdale
Doncaster, DN1 3BU
Assistant Director: Scott Cardwell

Project
Transforming Cities

Drawing Title
Consultation Drawing 2

Drawn by Ryan Clark	e-mail ryan.clark@doncaster.gov.uk
Approved by	Telephone 01302 734002
Date June 2022	Fax 01302 735028
Scales NTS	Drawing No. 29797-CON2
	Sheet / Revision 2 of 4
	Stage / Revision -